



BAKER TECH

Owned and managed by:



A Space for Ideas.

bakertechmn.com

The New Tech

Baker Tech is a business park re-envisioned for today's creative workplace. Centrally located just off the intersection of Highway 494 and Crosstown Highway 62, Baker Tech is uniquely situated close to nearby parks, bike trails and golf courses as well as bars, restaurants, shopping and fitness centers. Offering flexible workspace options, with modern, custom floor plans, Baker Tech is a value-forward move for your company's relocation or expansion. Baker Tech fits the way you work in a location that offers excellent off-site lifestyle options and on-site planned amenities.



On-Site Amenities

- On-site bike loan program for tenants
- On-site food trucks
- Modern, collaborative outdoor gathering areas
- Updated green spaces
- Exterior patios
- Updated monuments
- Lifetime Fitness 1/2 block away





Property Highlights

- 12' clear height
- 4/1000 parking
- Distinct entrances
- Individually metered electric and natural gas utilities
- Dock and drive in loading
- Ribbon glass windows
- Flexible and expandable floor plates
- HVAC included
- On-site taproom (Boom Island Brewing)
- Outside seating

The Future is Customizable

The spaces available at Baker Tech are ideal for companies looking for a blank canvas for their company work and culture to flourish. Whitebox vacancy suites are available and ready to inspire your company's vision for a creative office. Come explore the potential customization of a new space for your ideas at Baker Tech.





BAKER ROAD

BAKER ROAD

WEST 62ND STREET

494

MINNESOTA
62

I

II

III

IV

Suite 473
5,617 SF

Suite 475
13,483 SF

V



5929 Baker Road Building IV

Suite 473

Available: 3,661 SF office
1,956 SF warehouse

5,617 SF Total

Loading: 2 dock doors

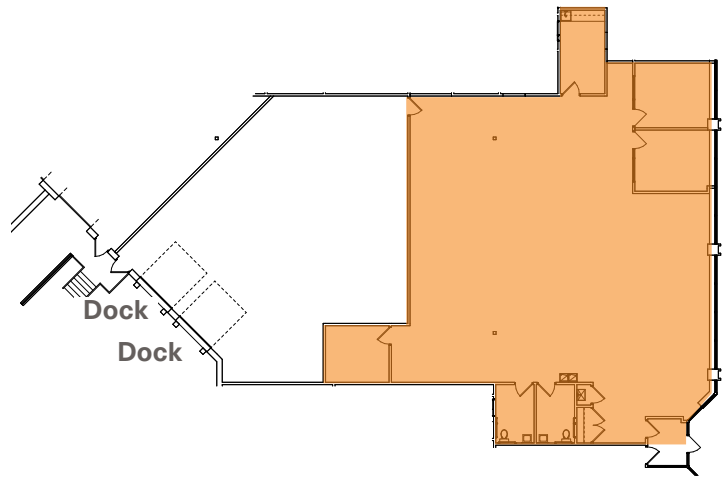
Rates: Negotiable

Tax & CAM (2025): \$6.70 PSF total

HVAC: Yes

Telecom: Fiber

Clear Height: 12'



5929 Baker Road Building IV

Suite 475

Available: 10,973 SF office
2,510 SF warehouse

13,483 SF Total

Loading: 1 dock door
1 drive-in door

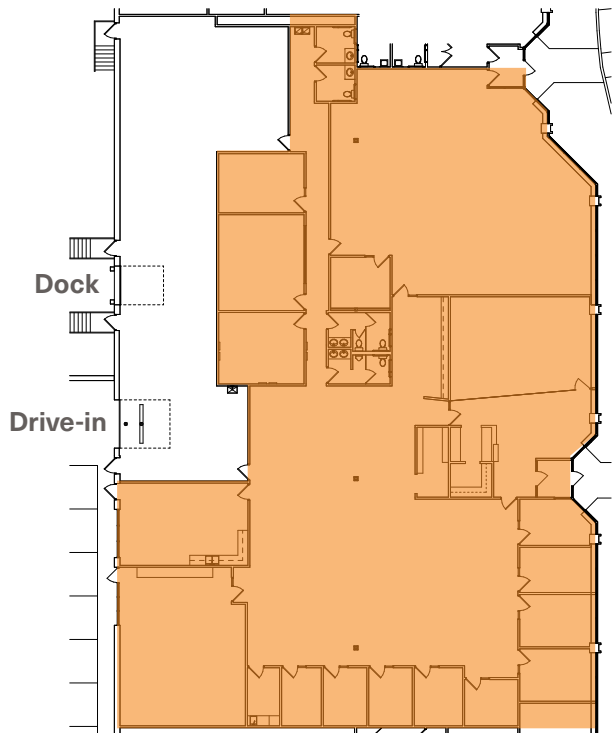
Rates: Negotiable

Tax & CAM (2025): \$6.70 PSF total

HVAC: Yes

Telecom: Fiber

Clear Height: 12'





Owned and managed by:



Leasing contacts:

JOE OWEN
 952 897 7888
 joe.owen@colliers.com

CORBIN CHAPMAN
 952 374 5811
 corbin.chapman@colliers.com



Colliers International
 Minneapolis-St. Paul
 colliers.com/msp